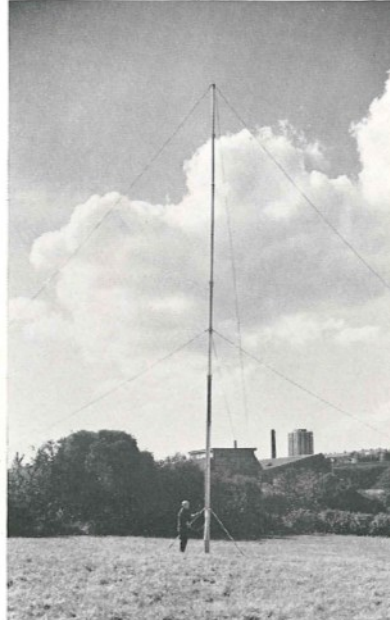




Quick-erecting Telecommunication Mast



X1001



X1000

Telescopic Mast Type J0501

QUICK-ERECTING masts are a necessity when establishing communications between mobile-to-mobile or mobile-to-static stations at speed. From the 'hand-brake on' time of halting the mobile vehicle, communications can be set up between stations in less than 15 minutes using the Marconi-designed mast described on this page. It is suitable for:

- i) Small Yagi aerials.
- ii) Single-wire communications aerials up to 250 ft (75 m) long (hung between two similar masts).
- iii) Whip aerials.

Telescopic Mast Type J 0501

The main purposes of this mast are to provide a support for wire aerials between two masts, the erection of light (u.h.f./v.h.f.) arrays or the support of whip aerials.

The mast has the following advantages:—

- i) Easily handled.
- ii) Compact in size and shape when packed for stowage.

iii) It can be erected by two men in approximately four minutes.

The complete mast is supplied in one section, and consists of a number of aluminium tubes of decreasing diameter. The tubes fit one inside another, the outside diameter of one tube being approximately equal to the inside diameter of its mating tube.

The mast is erected by means of a chain drive through a set of sprockets to a plug. Each section of the mast is picked up in turn by the plug and lifted to its highest position, where it is secured by two 'snap' clips.

When the mast is fully erected it is supported by six Terylene guy wires, three at the top and three at a point approximately half-way up. Two of the guys are attached to each of three stakes equispaced around the mast.

The mast can be conveniently mounted on the transmitter vehicle, or if required, a collapsible tripod fitted near the base enables the mast to be erected on the ground.

To assist in the initial stages of erection

of the mast, the base has been fitted with a large ground spike, and the base tripod has adjustment in each leg to accommodate variations in ground slope.

Data Summary

Height extended:	48 ft (13.4 m)
Operational wind speed:	60 mile/h (100 km/h)
Total weight:	130 lb (59 kg)
No. of guy wires:	6
Speed of erection:	4 min.
Stowage space for transport:	7 ft x 1 ft dia. (214 cm x 31 cm)

Marconi

The Marconi Company Limited
Mechanical Products Division
Felling Works, Gateshead 10, Co. Durham
Telephone: Felling 692501 · Telex: 53312
Telegrams: Expanse Gateshead Telex