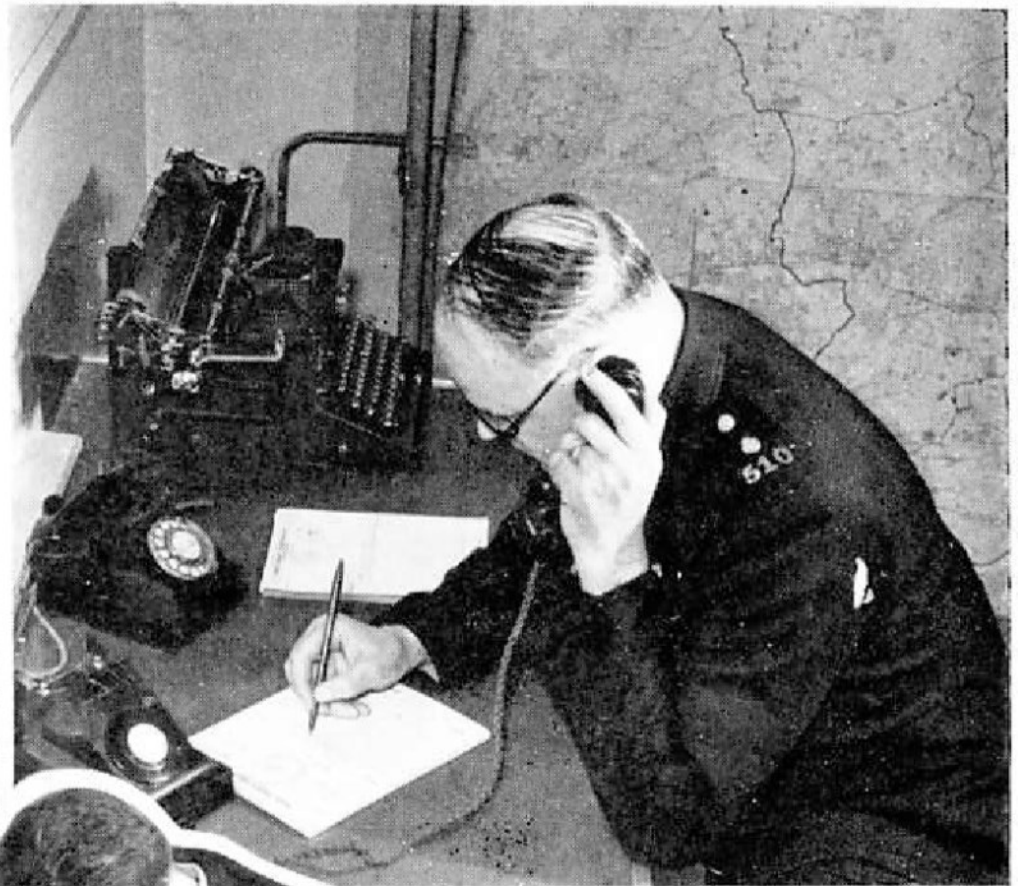


# Calling

*These pictures of our police at work were taken at the Chelmsford Headquarters of the Essex County Constabulary. They show our VHF mobile radio being used to make quick contacts in the war against crime. A call may be of only minor importance, but it may be for robbery, accident, even murder. A 999 call for assistance is connected*



*directly with the phone shown in the first picture. There is always a policeman on duty at headquarters to deal with these calls. The message has been recorded on a special form, and the superintendent with his assistant examines a*

*large-scale map of the district from which the call has come. He plans his campaign. On the wall behind them is a huge map on a smaller scale covering the whole of Essex. Meanwhile, in an adjoining room, the police sergeant is at the microphone of his Home Office model headquarters set alerting patrol cars and issuing instructions*

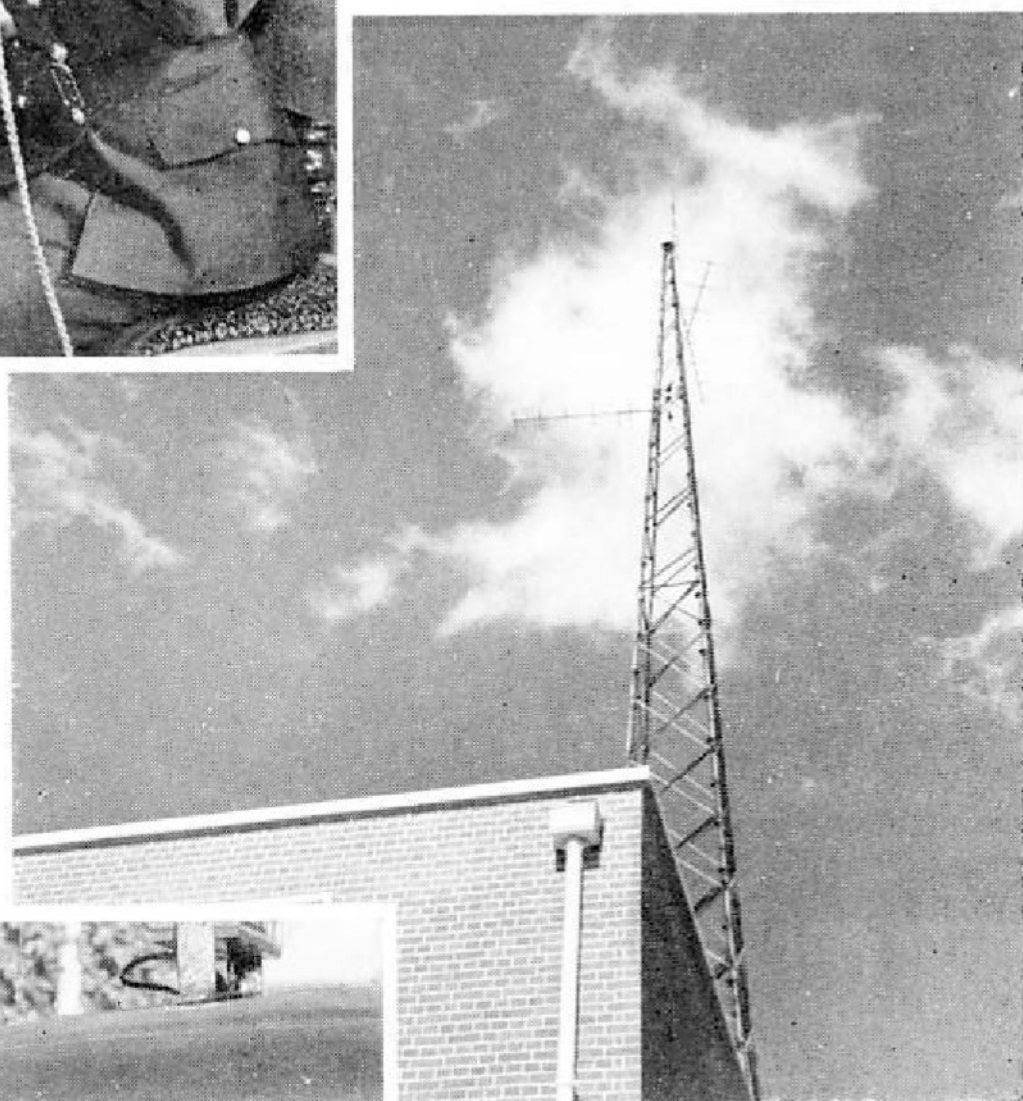


# all Cars!



*At the same time a policewoman operates the private telephone switchboard which has direct line connections with other stations and various officials. The aerial from which the wireless signals go out is silhouetted against the sky above the building in the fifth picture. This is a focal point of a network linking the county*

*Repeater transmitters boosting the signals in the more distant areas. And so the organisation slides quickly into action. Our final picture shows a sergeant and his driver receiving their orders in a patrol car*



*The sergeant speaks into the microphone of the control unit with built-in loudspeaker, which is fitted into the car dashboard. This Marconi unit operates the 10 watt transmitter and receiver units which are in the "boot" of the car. Within a matter of seconds the car is on its way to deal with the call*